

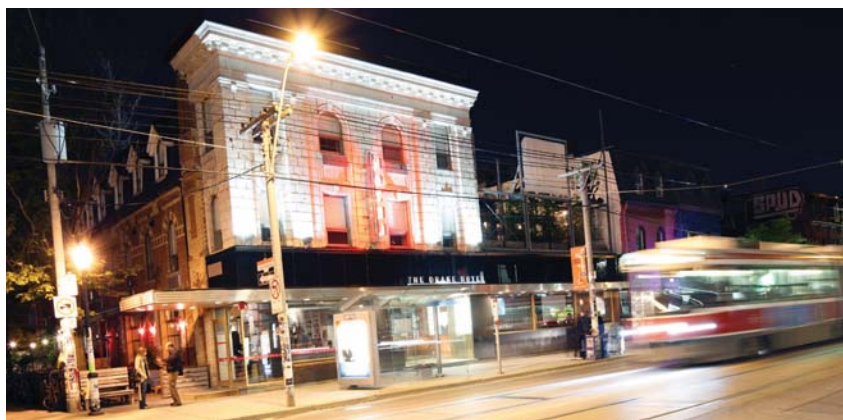
edge

on Triangle Park



URBANCORP.

PLAZA[®]
pureplaza.com



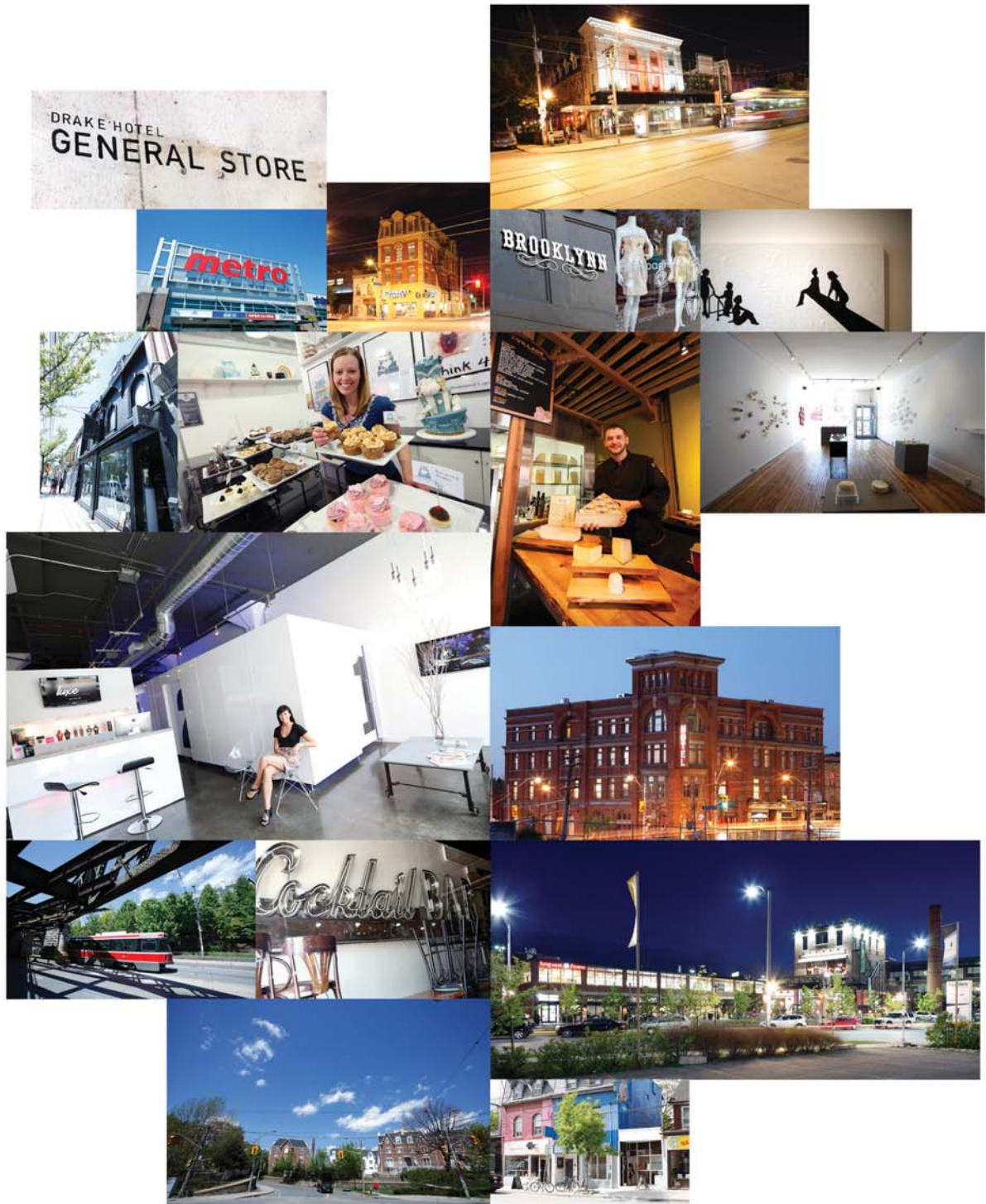
the queen west **edge** on Triangle Park

Park Yourself in Supreme Luxury

There are few places in this world that offer an island of serene tranquility in the midst of a bustling metropolis. A cosmopolitan community styled with luxury and flair, located on the edge of a unique urban park. Welcome to Edge on Triangle Park, located across from the Drake Hotel, right in the heart of the vibrant West Queen West neighbourhood. Queen Street is Toronto's ultimate go-to place for everything cool. Every corner of the street radiates edgy art and culture, from contemporary boutiques to antique stores to retro galleries.

URBANCORP.

PLAZA
pureplaza.com



the cool **edge**

on Triangle Park

Live at the heart of three great downtown neighbourhoods,
King West, Queen West and Liberty Village

West Queen West is ground zero for uber-cool, a magnet for artists and artisans and a mecca for creative pursuits and businesses. All this has imbued the neighbourhood with a distinctive hip character that finds expression in the countless arty studios, salons, boutiques and galleries. For an exciting night out on the town, take your pick from several fine dining establishments, bars, bistros and nightclubs close by.

Over to the south, the King West neighbourhood is unfolding in an ever expanding explosion of excitement, with the emergence of Liberty Village. A short walk to the east is the beautiful Trinity-Bellwoods Park. You can also bike or jog on the boardwalk along the western beaches and the Martin Goodman Trail. And when it's time to hit the bright lights, streetcars at your doorstep offer speedy connections to the subway and the downtown core.

URBANCORP.

PLAZA
pureplaza.com

A New Definition of Urban Style



The slim, sleek towers of Edge present a whole new design concept, with most suites offering windows at the front and back, creating a remarkable "shine-through" fenestration effect. The clean streamlined façade of both towers is punctuated by floating urban greespaces on the exterior upper storeys. A landscaped courtyard between the two towers will serve as a unifying feature for the community and provide a central focal point for the residents.

With its exquisitely detailed interiors, soft gallery style lighting and plush reception area, the immaculately designed lobby is as much a sophisticated welcome as an elegant introduction to luxury living. Completing the fine ambience, the 24-hour Concierge is always available with a courteous greeting or a helping hand.

the cutting **edge**

on Triangle Park



URBANCORP.

PLAZA
pureplaza.com



One Iconic Community

the quality **edge**

on Triangle Park

When it comes to defining the skyline of downtown Toronto, both Urbancorp and Plaza stand tall as two of the foremost builders at the cutting edge of quality and design. Now these two great builders come together to offer you downtown's newest landmark, Edge on Triangle Park.

As the first builder to develop the King West Village neighbourhood, and the first to offer new homes within the West Queen West district, Urbancorp continues to lead the way for incredible residences in downtown west. Vibrant Urbancorp projects like 954 King West, Electra Lofts and KingTowns are helping to establish and further define King West Village, transforming it into a great new urban neighbourhood. Over the years, Urbancorp has built thousands of new condominium suites, lofts and townhomes in the City of Toronto.

Plaza Urban Residential Communities is one of Toronto's most experienced residential condominium construction and development organizations. The Plaza philosophy of providing a uniformly high level of standard quality has made our name synonymous with lasting value in design and finish. Over 5,000 condominiums, either already completed or currently under development, bear the Plaza name, in downtown Toronto's most desirable neighbourhoods. Plaza Urban Residential Communities: the quality is built in from the start.

Two Great Builders,



URBANCORP

PLAZA
pureplaza.com

features & finishes

edge on Triangle Park

General Features

1. Architecturally designed thermal glazed aluminum windows, as per plan
2. Glazed aluminum door to access balcony, patio or terrace, as per plan
3. Translucent sliding door system as per plan
4. Engineered laminate wood flooring in living room, dining room, kitchen, den, hallways and bedroom(s)
5. Entry door with contemporary hardware and privacy viewer
6. In-suite rental heating and cooling system with HRV
7. All homes pre-wired for high speed cable internet and cable ready for HDTV
8. All interior stairs finished with broadloom
9. Individual electrical service panel
10. Light fixtures at front entrance and bathroom

Kitchen

1. Contemporary European design cabinetry in selection of wood and coloured finishes
2. Undermount stainless steel sink with single lever faucet with integrated vegetable spray
3. Matching designer ceramic backsplash
4. Stone countertops in a selection of marbles and granites with undermount sink
5. Halogen track lighting
6. Brand name appliance package including:
 - Stainless Steel finish range with glass top – self cleaning
 - Stainless Steel finish dishwasher
 - Stainless Steel finish or Titanium finish refrigerator
 - Stainless Steel finish built-in microwave with hood fan vented to exterior
 - Stacked washer & dryer

Bathroom

1. Designer ceramic tile as per plan
2. Contemporary European design cabinetry in selection of wood and coloured finishes
3. Stone countertops in a selection of marbles and granites with undermount sink
4. Designer mirror over sink with light
5. Soaker tub
6. Temperature controlled mixing valve to tub/shower
7. Ceiling exhaust fan vented to exterior

Electrical

1. Living room and bedrooms pre-wired for cable T.V. and telephone, heat detector pre-wired to the fire annunciator panel
2. Individual suite smoke detector
3. Controlled split outlets in “Living / Dining” and “Bedroom” areas, as per plan

Floors and specific finishes will depend on Vendor's package as selected.

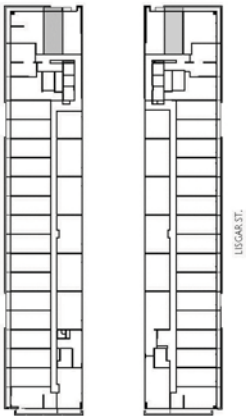
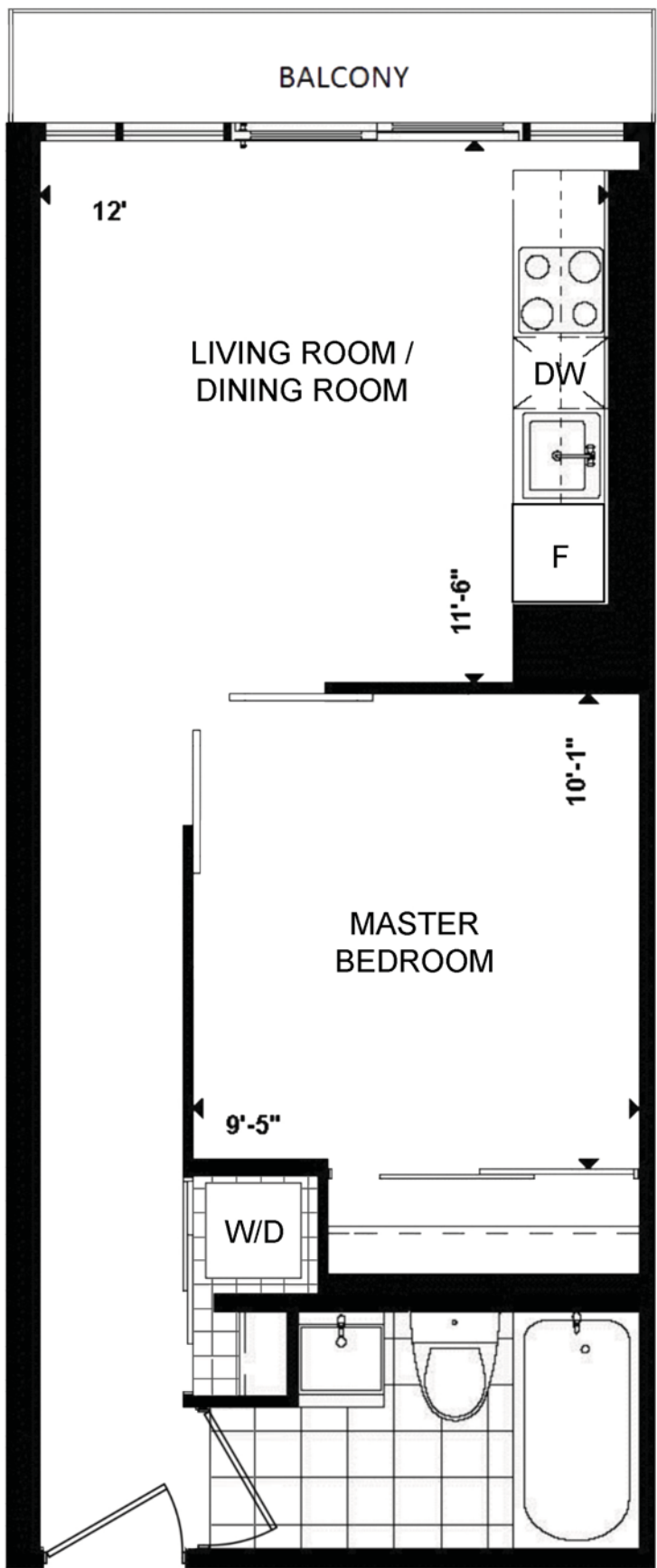
All specifications, dimensions, and materials are subject to change without notice. E.&O.E.

URBANCORP

PLAZA[®]
pureplaza.com

1C - 1 Bedroom
406 SQ. FT.

edge
on Triangle Park



SUDBURY ST.
FLOORS 5 THRU 8

N

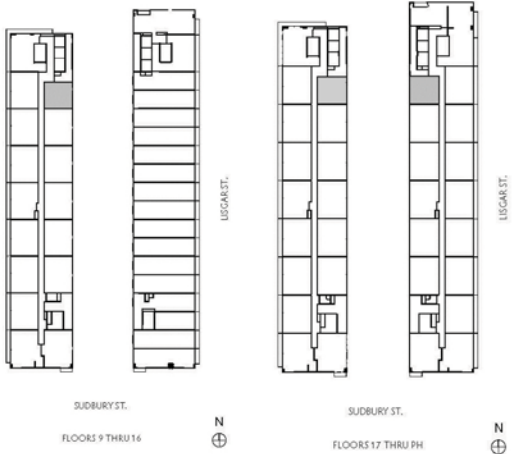
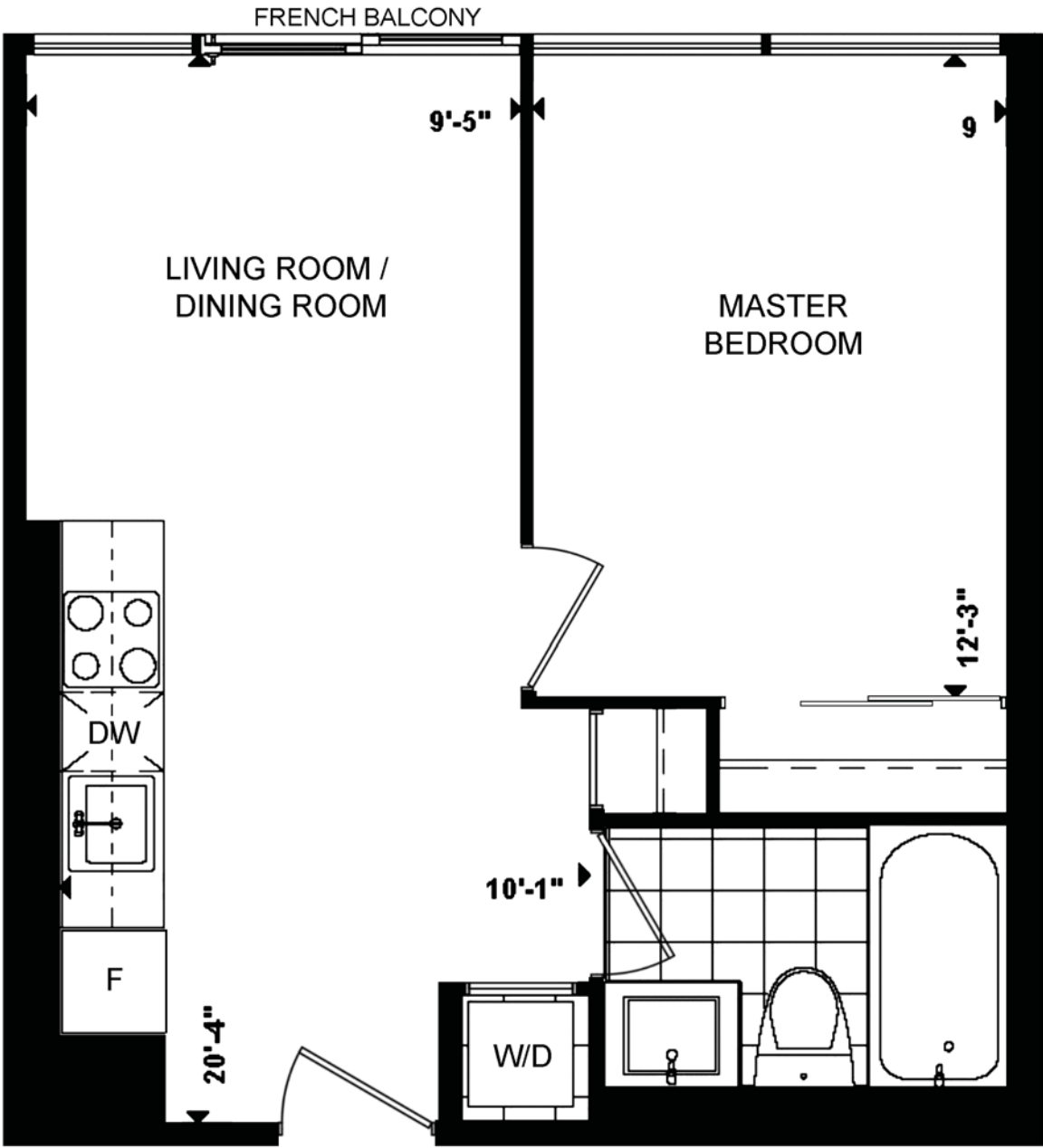
URBANCORP

PLAZA[®]
pureplaza.com

1B1 - 1 Bedroom

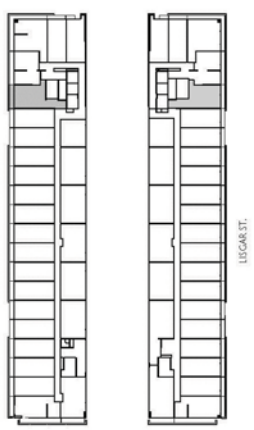
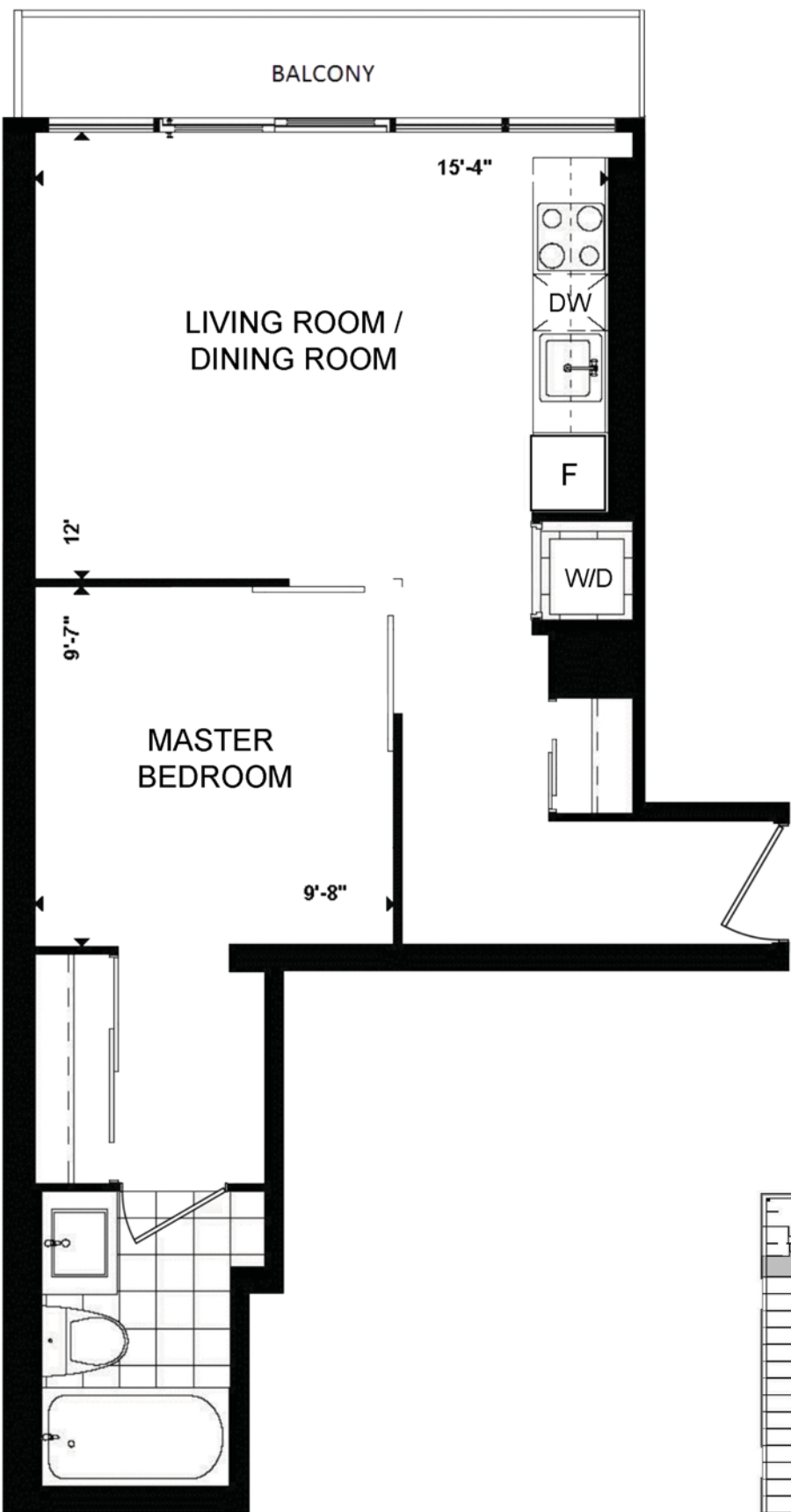
412 SQ. FT.

edge
on Triangle Park



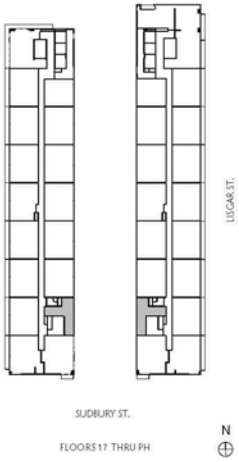
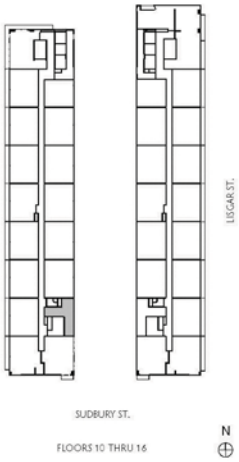
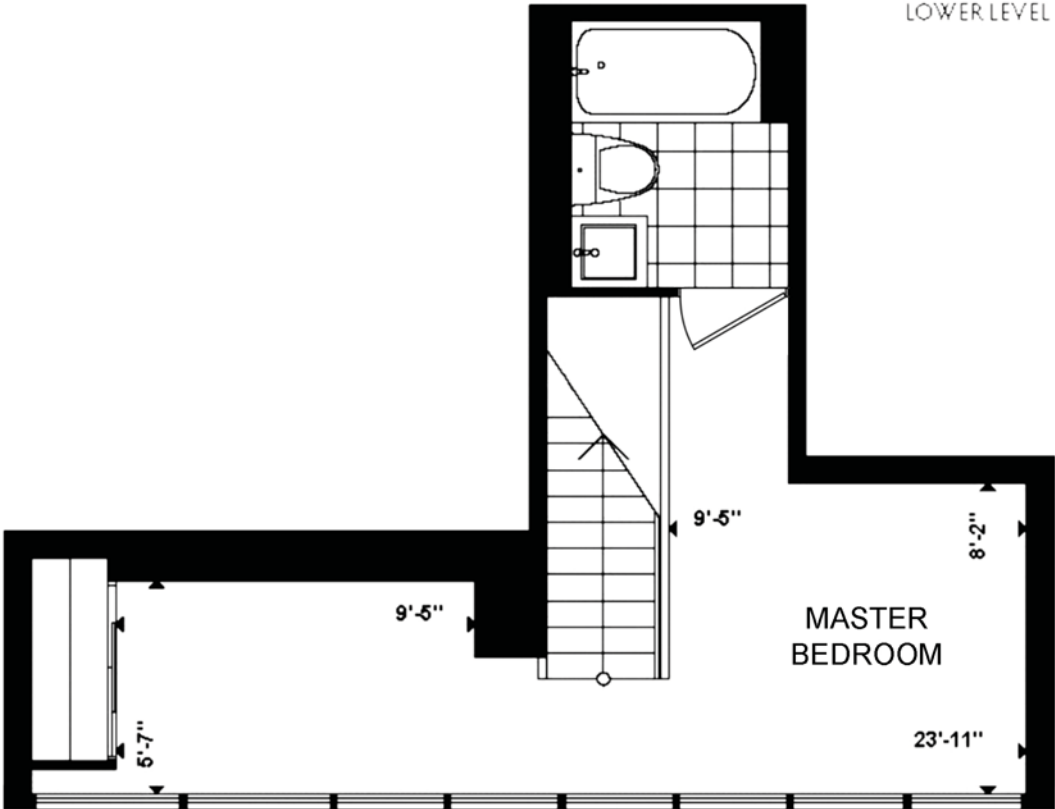
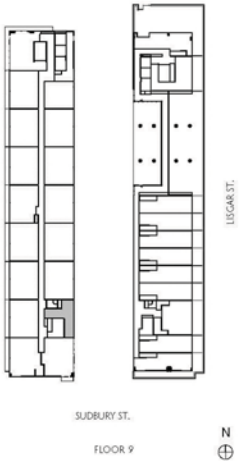
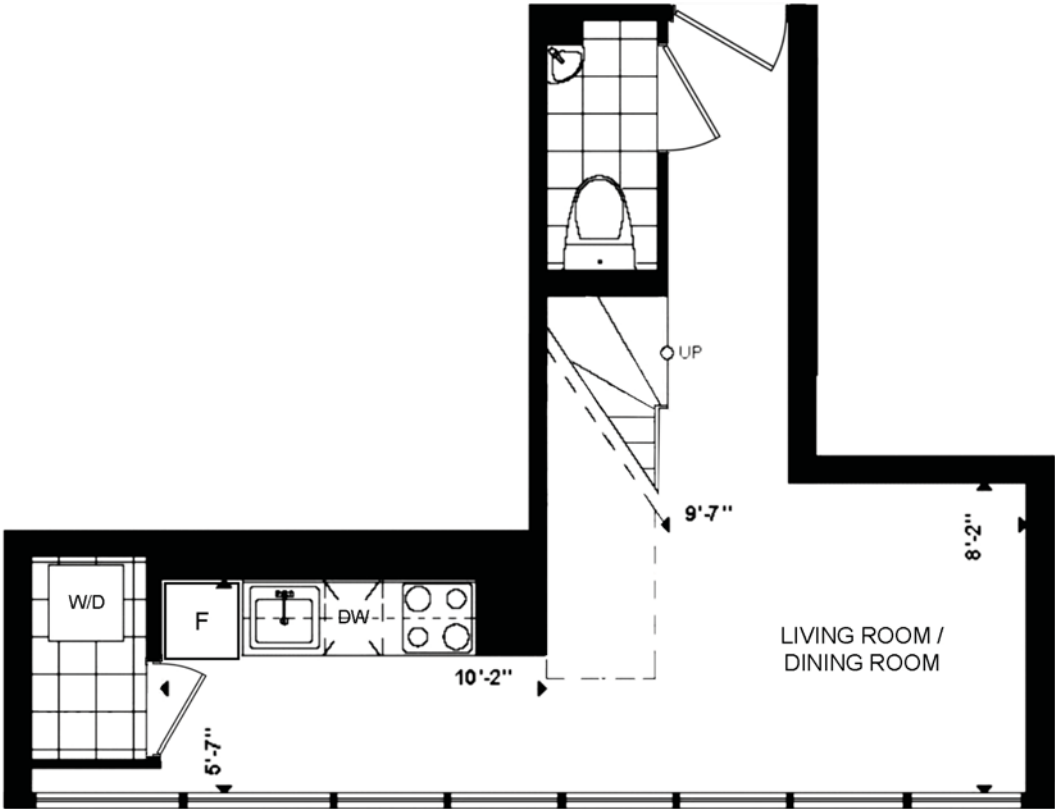
1C2 - 1 Bedroom 489 SQ. FT.

edge
on Triangle Park



1H - 1 Bedroom 603 SQ. FT.

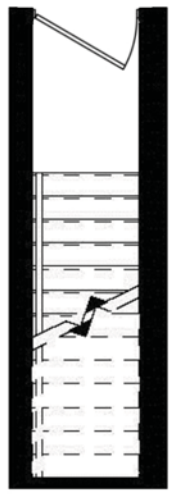
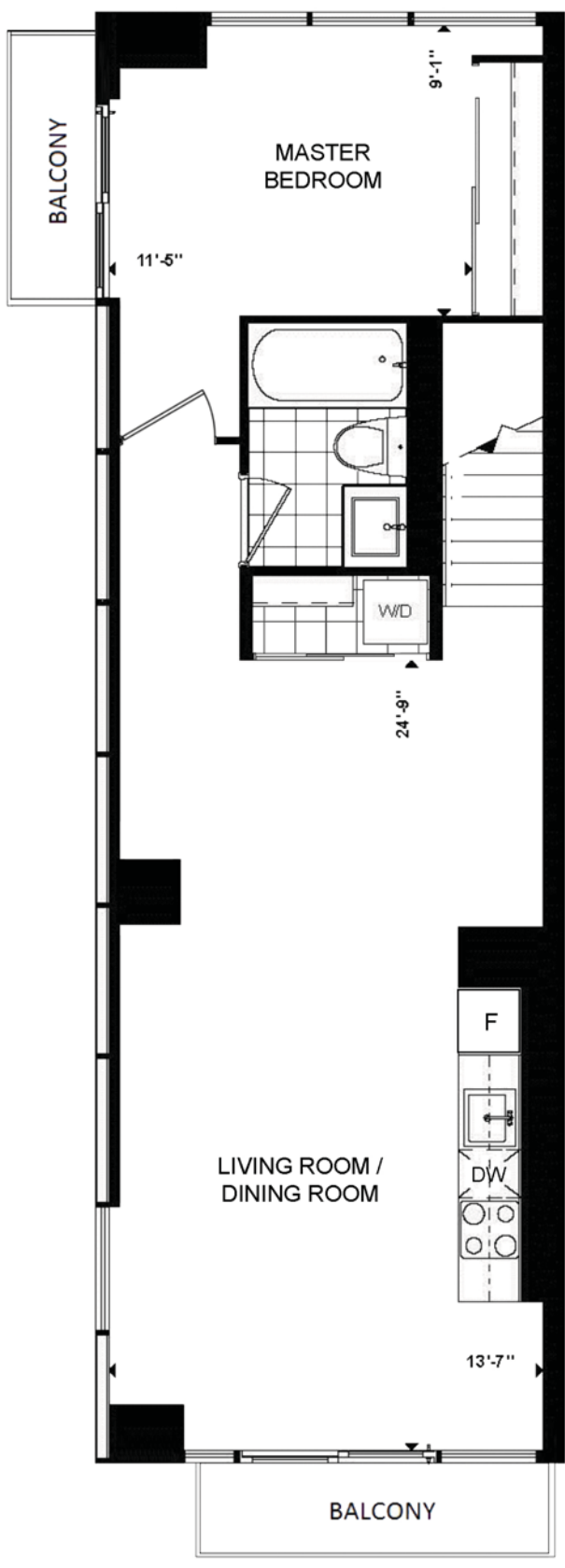
edge
on Triangle Park



E1AC - 1 Bedroom

713 SQ. FT.

edge
on Triangle Park



ENTRY ONE
FLOOR BELOW



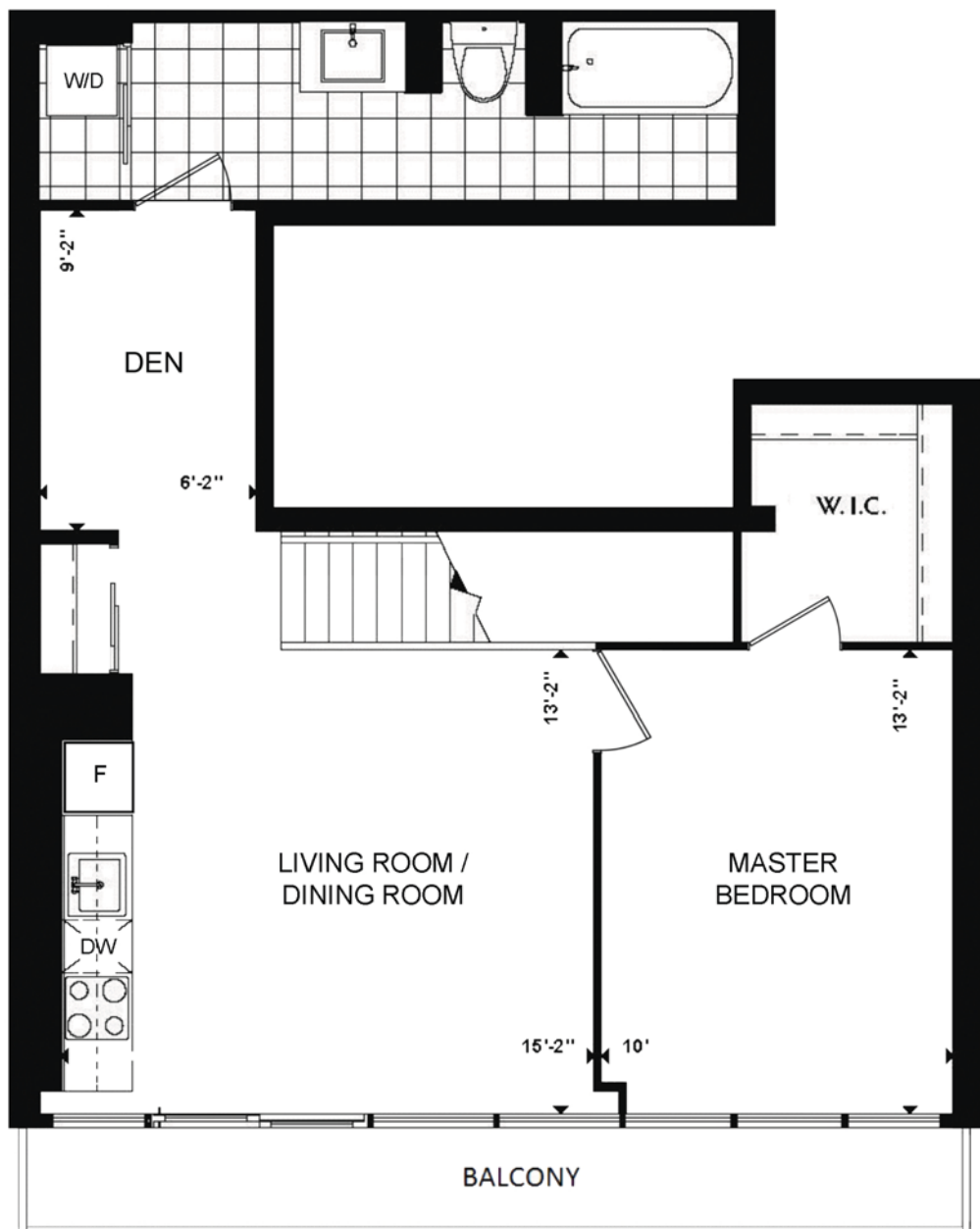
SUDBURY ST.
FLOORS 10, 12 & 16



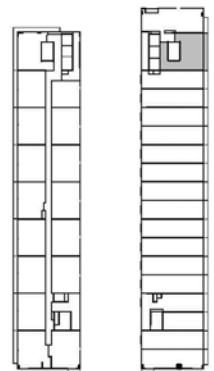
E1B+D - 1 Bedroom + Den

724 SQ. FT.

edge
on Triangle Park



ENTRY ONE
FLOOR BELOW

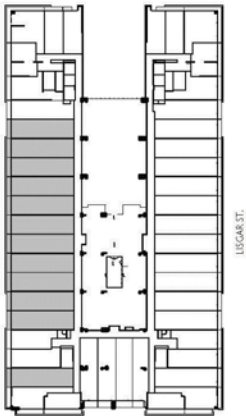


SUDBURY ST.
FLOORS 12 & 16



W2G-1 - 2 Bedrooms
595 SQ. FT.

edge
on Triangle Park



SUDBURY ST.
FLOORS 2 THRU 6

